

3.8 Rozměry

3.8 Dimensions

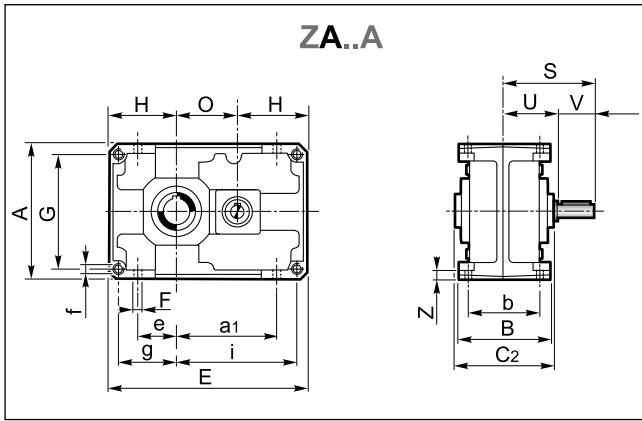
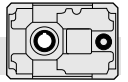
3.8 Abmessungen

	ZA...A						ZA...B - ZF...B - ZA...C - ZF...C																			
	71	90	112	140	180	225	80	100	125	160	180	200														
A	142	180	224	280	360	450	160	200	250	320	360	400														
a	102	134	166	209	272.5	344	82	102	127	162.5	185	204														
a1	—						106	134	169	217	207	277.5														
B	112	127	150	175	215	290	127	150	175	215	255	290														
b	90	104	125	145	180	240	104	125	145	180	210	240														
C2	115	130	155	180	220	300	130	155	180	220	260	300														
D2 H7	24	28	32	30	35	42	40	45	55	50	70	60	100	32	30	35	42	40	45	55	50	70	60	90	80	100
E	206	262	326	407	522.5	654	306	384	479	609.5	652	766.5														
e	38	52	64	82	110	140	42	52	67	90	100	115														
F	9	11	13	15	17	21	11	13	15	17	19	21														
f	M8x13	M10x16	M12x19	M14x21	M16x25	M18x30	M10x16	M12x19	M14x22	M16x25	M18x35	M18x30														
G	122	155	194	244	320	400	135	170	214	280	310	350														
g	61	77.5	97	122	160	200	67.5	85	107	140	155	175														
H	71	90	112	140	180	225	80	100	125	160	180	200														
H1	—						35	36	43	58	58	73														
H2	—						80	100	125	160	160	200														
i	125	159.5	199	249	322.5	404	213.5	269	336	429.5	447	541.5														
O	64	82	102	127	162.5	204	146	184	229	289.5	312	366.5														
O1	—						191	248	311	391.5	414	493.5														
Z	9	11	13	15	17	25	11	13	15	17	22	25														

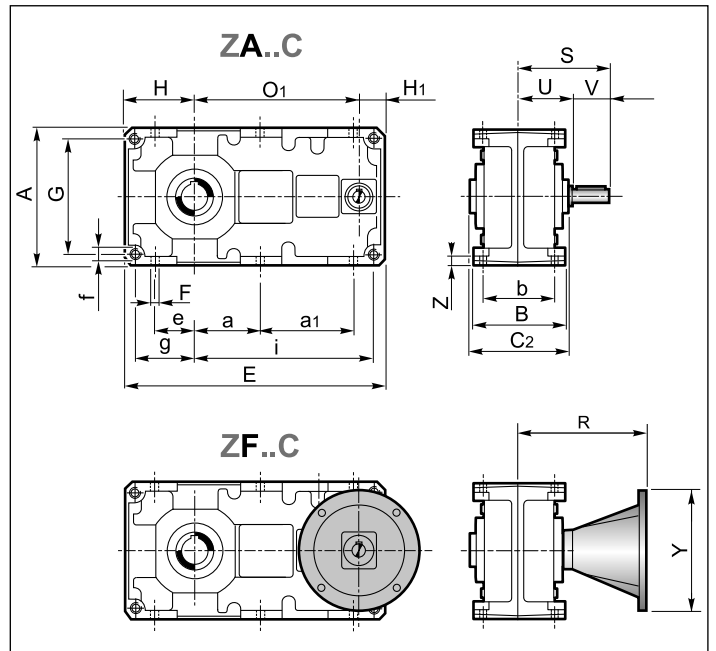
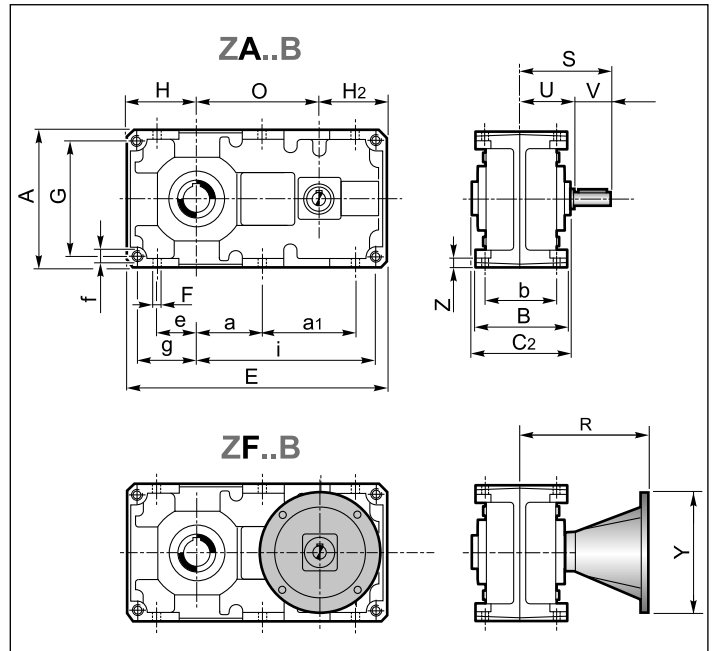
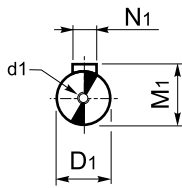
	ZA...A						ZA...B						ZA...C					
	71	90	112	140	180	225	80	100	125	160	180	200	80	100	125	160	180	200
D1 h6	19	24	28	38	48	60	19	24	28	38	48	48	14	19	24	28	28	38
S	105	127.5	150	190	230	260	105	127.5	150	190	210	230	95	117.5	140	170	190	230
U	65	77.5	90	110	150	150	65	77.5	90	110	130	150	65	77.5	90	110	130	150
V	40	50	60	80	80	110	40	50	60	80	80	80	30	40	50	60	60	80
kg	11.5	18	30.5	52	104	210	18	34	62	114	165	250	20	38	68	125	180	275

	ZF...B																		
	80			100			125			160			180			200			
IEC	71	80/90	71	80/90	100/112	80/90	100/112	132	90	100/112	132	160/180	80/90	100/112	132	160/180	132	160/180	200
Y	160	200	160	200	250	200	250	300	200	250	300	350	200	250	300	350	300	350	400
R	151	172	162	182	192	205	215	236	245	255	276	306	266	276	297	327	316	346	348
kg	21		39			72			131			185			280				

	ZF...C																		
	80			100			125			160			180			200			
IEC	63	71	80/90	71	80/90	71	80/90	100/112	80/90	100/112	132	80/90	100/112	132	100/112	132	160/180	132	160/180
Y	140	160	200	160	200	160	200	250	200	250	300	200	250	300	250	300	250	300	350
R	132	139	160	152	173	176	197	207	230	240	261	245	255	276	295	316	316	346	348
kg	23			43			78			142			200			305			



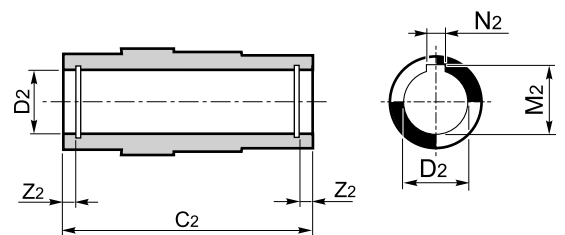
Vstupní hřídel
Input shaft
Antriebswelle

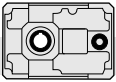


ZA...A		71	90	112	140	180	225
D1 h6		19	24	28	38	48	60
d1		M8	M8	M8	M10	M12	M16
M1		21.5	27	31	41	51.5	64
N1		6	8	8	10	14	18
ZA...B		80	100	125	160	180	200
D1 h6		19	24	28	38	38	48
d1		M8	M8	M8	M10	M10	M12
M1		21.5	27	31	41	41	51.5
N1		6	8	8	10	10	14
ZA...C		80	100	125	160	180	200
D1 h6		14	19	24	28	28	38
d1		M6	M8	M8	M8	M8	M10
M1		16	21.5	27	31	31	41
N1		5	6	8	8	8	10

ZA...A		71	90	112	140	180	225							
C2		115	130	155	180	220	300							
D2 H7	24	28	32	30	35	42	40	45	55	50	70	60	100	90
M2	27.3	31.3	35.3	33.3	38.3	45.3	43.3	48.8	59.3	53.8	74.9	64.4	106.4	95.4
N2	8	8	10	8	10	12	12	14	16	14	20	18	28	25
Z2	—	8.7	8.7	8.4	11	11	11	11	11.9	15.4	15.9	20	18.9	
ZA...B - ZF...B - ZA...C - ZF...C		80	100	125	160	180	200							
C2		130	155	180	220	260	300							
D2 H7	32	30	35	42	40	45	55	50	70	60	90	80	100	90
M2	35.3	33.3	38.3	45.3	43.3	48.8	59.3	53.8	74.9	64.4	95.4	85.4	106.4	95.4
N2	10	8	10	12	12	14	16	14	20	18	25	22	28	25
Z2	8.7	8.7	8.4	11	11	11	11.9	15.4	15.9	18.9	18.9	20	18.9	

Dutá výstupní hřídel
Hollow output shaft
Abtriebshohlwelle





3.9 Druhý vstup

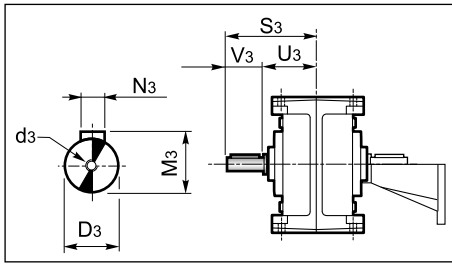
Na základě požadavku je možné dodat převodovku s druhým vstupem.

3.9 Second input

On request it is possible to supply the gearbox with an additional input.

3.9 Zweiter Antrieb

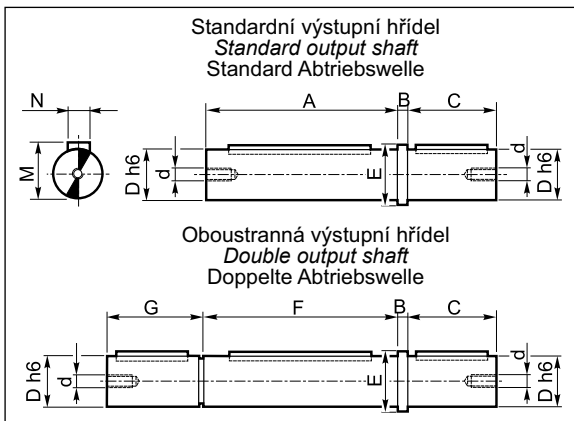
Auf Wunsch ist das Getriebe mit Zusatzantrieb lieferbar.



	ZA...											
	80B	100B	125B	160B	180B	200B	80C	100C	125C	160C	180C	200C
D3 _{g6}	14	19	24	28	28	38	14	14	19	24	24	28
d3	M6	M8	M8	M8	M8	M10	M6	M6	M8	M8	M8	M8
N3	5	6	8	8	8	10	5	5	6	8	8	8
M3	16.3	21.8	27.3	31.3	31.3	41.3	16.3	16.3	21.8	27.3	27.3	31.3
S3	95	117.5	140	170	190	230	95	107.5	130	160	180	210
U3	65	77.5	90	110	130	150	65	77.5	90	110	130	150
V3	30	40	50	60	60	80	30	30	40	50	50	60

3.10 Příslušenství

Výstupní hřídel



Materiál výstupní hřídele: C45
Output shaft material: C45
Material der Abtriebswelle: C45

3.10 Accessories

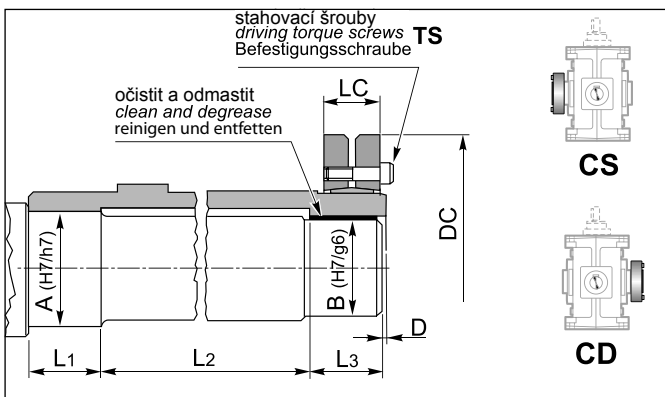
Output shaft

3.10 Zubehör

Abtriebswelle

	Z...							
	71A	90A 80B 80C	112A 100B 100C	140A 125B 125C	180A 160B 160C	180B 180C	225A 200B 200C	
A	114	129	129	154	154	179	219	259
B	5	6	6	8	8	10	12	15
C	50	60	60	80	80	100	125	140
D _{h6}	24	32	35	42	45	55	70	90
d	M8	M8	M8	M10	M10	M10	M12	M16
E	30	40	43	50	53	65	80	110
F	115	130	—	155	—	180	220	260
G	49	59	—	79	—	99	124	141
M	27	35	38	45	48.5	59	74.5	94
N	8	10	10	12	14	16	20	25

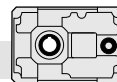
Dutá výstupní hřídel se stahovacím kroužkem



Hollow output shaft with shrink disc

Abtriebshohlwelle mit Schrumpfscheibe

	Z						
	71A	90A 80B 80C	112A 100B 100C	140A 125B 125C	180A 160B 160C	180B 180C	225A 200B 200C
A	27	37	47	57	72	92	102
B	25	35	45	55	70	90	100
D	2	2	2	2	2	3	3
DC	60	80	100	115	155	188	215
LC	22	26	31	31	39	50	54
L ₁	36	39	45	50	60	70	80
L ₂	68	82	100	115	143	175	200
L ₃	36	39	45	50	60	70	80
TS (Nm)	4	12	12	12	30	59	59



Ochranný kryt duté výstupní hřídele

Hollow shaft protection kit

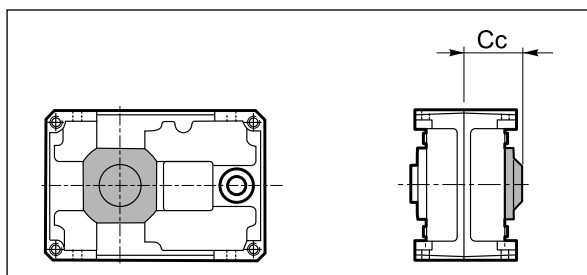
Schutzvorrichtung für die Hohlwelle

Na objednání můžeme dodat ochranný kryt duté výstupní hřídele. Kryt chrání dutou výstupní hřídel před vniknutím cizích předmětů a kapalin vyskytujících se v pracovním prostředí. Rozměry jsou uvedeny v následující tabulce.

On request we can supply a hollow shaft protection kit. The kit features a gasket which prevents any contact between hollow shaft and foreign bodies or fluids existing in the working environment. Over-all dimensions are reported in the following table.

Auf Wunsch ist eine Schutzvorrichtung für die Hohlwelle lieferbar. Die Schutzvorrichtung weist eine Dichtung auf, die zur Vermeidung von irgendwelchem Kontakt zwischen Hohlwelle und Fremdkörper oder Flüssigkeiten der Arbeitsumgebung dient.

In der folgenden Tabelle wird den Raumbedarf angegeben.

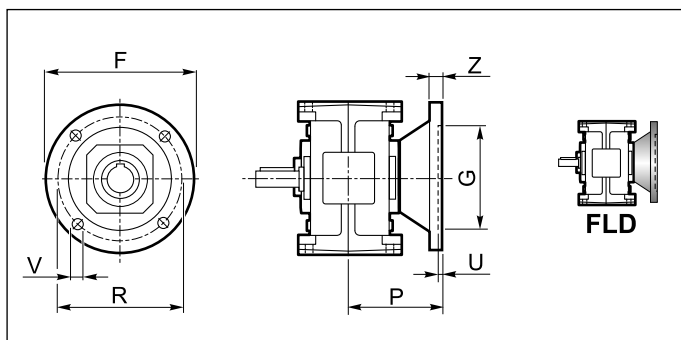


Cc	Z						
	71A	90A 80B 80C	112A 100B 100C	140A 125B 125C	180A 160B 160C	180B 180C	225A 200B 200C
	79.5	87	105	120.5	141.5	167.5	191.5

Výstupní příruba

Output flange

Abtriebsflansch

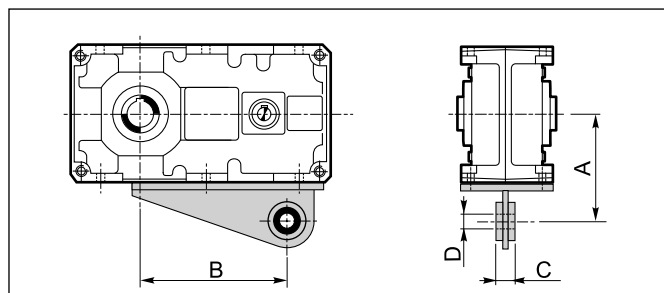
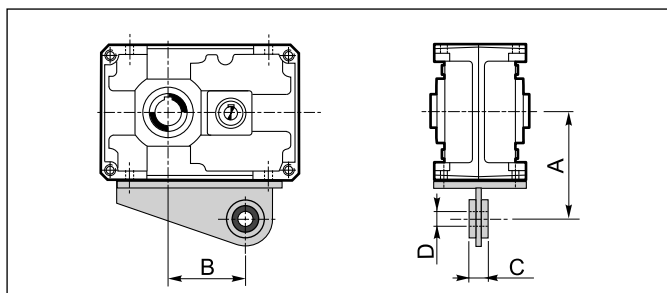


	Z...					
	71A	90A 80B 80C	112A 100B 100C	140A 125B 125C	180A 160B 160C	180B 180C
F	160	200	250	300	350	400
G _{G6}	110	130	180	230	250	300
R	130	165	215	265	300	350
P	87	100	125	150	180	215
U	4	4.5	5	5	6	6
V	12	12	14	16	18	20
Z	10	12	16	20	25	30
kg	2	3.2	5	8	12.5	24

Zkrutová vzpěra

Torque arm

Drehmomentstütze



	Z					
	71A	90A	112A	140A	180A	225A
A	123	140	172	205	260	325
B	84	116	144	189	247.5	319
C	25	25	30	30	35	45
D	20	20	25	25	35	40

	Z					
	80B 80C	100B 100C	125B 125C	160B 160C	180B 180C	200B 200C
A	130	160	190	240	280	300
B	170	214	276	354.5	367	456.5
C	25	30	30	35	45	45
D	20	25	25	35	40	40